

# MPS-064-XXX

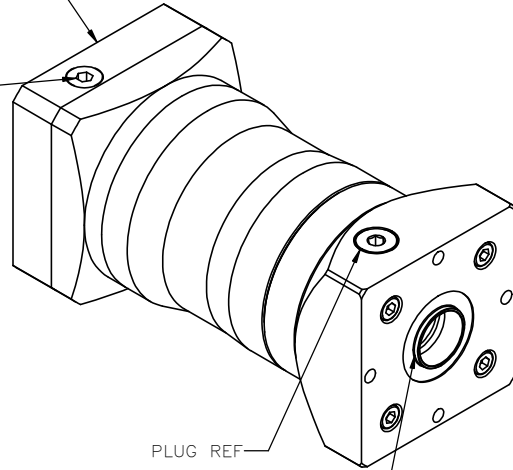
## SINGLE STAGE HOLLOW OUTPUT PLANETARY GEARBOX

0.750" BORE  
(XXX = GEARBOX RATIO)

REVISION HISTORY			
REV.	DESCRIPTION	DATE	REVISED BY:

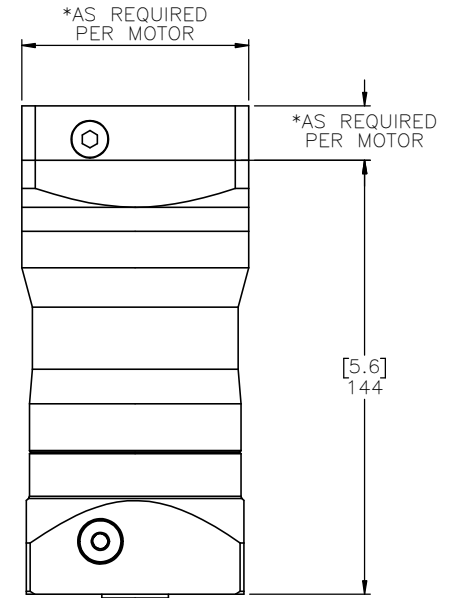
MOTOR INPUT SHAFT DIAMETER 24mm MAX

TORQUE SETTING BASED ON COUPLING SCREW SIZE



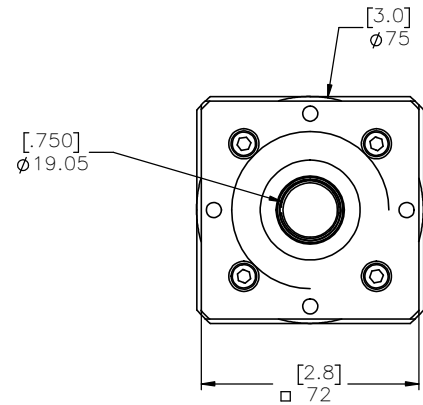
PLUG REF

CLAMP SCREW TORQUE SETTING 16NM [140 IN-LBS]



**NOTES:**

- 1.) MOTOR **MANUFACTURER AND MODEL NUMBER** REQUIRED TO PROPERLY SIZE THE MOTOR ADAPTOR PLATE. MAXIMUM MOTOR INPUT SHAFT DIAMETER IS 24mm.
- 2.) ADAPTOR PLATE SIZE WILL VARY BASED ON MOTOR SPECIFIED. OVERALL DIMENSIONS AND PLATE THICKNESS WILL BE DIFFERENT FROM VISUAL REPRESENTATION ABOVE
- 3.) MOTOR FLANGE BOLT CIRCLE PATTERN AND HOLE DIAMETER ALONG WITH MOTOR SHAFT DIAMETER AND LENGTH WILL DETERMINE THE FINAL SIZE OF THE ADAPTOR PLATE
- 4.) MACRON DYNAMICS, INC. MAKES EVERY EFFORT TO MATCH MOTOR DIMENSIONS TO MOTOR MANUFACTURER'S SPECIFICATIONS. THESE MANUFACTURER'S SPECIFICATIONS CAN CHANGE FROM TIME TO TIME WITHOUT NOTICE. MACRON IS NOT RESPONSIBLE FOR ADAPTORS THAT DO NOT MATE WITH THE MOTORS IF REFERENCE DIMENSIONS HAVE CHANGED OR IF THE USER CHANGES MOTOR MODELS AFTER PURCHASE



GEARBOX RATIO	3:1	10:1	5:1	7:1
MPG PART NUMBER SUFFIX	003	010	005	007
NOMINAL OUTPUT TORQUE – Nm (lb-in)	21 (186)	26 (230)	25 (222)	26 (230)
MAXIMUM ACCELERATION TORQUE – Nm (lb-in)	40 (354)	48 (425)	53 (470)	50 (443)
NOMINAL INPUT SPEED – RPM	3500	4000	3700	4000
MAXIMUM INPUT SPEED – RPM	6000	7000	7000	7000
STANDARD OUTPUT BACKLASH – arcmin	<8	<8	<8	<8
WEIGHT – kg (lb)	2 (4.4)	2 (4.4)	2 (4.4)	2 (4.4)
MASS MOMENT OF INERTIA (STD INPUT)– kg/cm2	.56	.40	.44	.41
MASS MOMENT OF INERTIA (LARGE INPUT >19mm MOTOR SHAFT)– kg/cm2	.99	.83	.87	.84
EFFICIENCY AT LOAD	97%	97%	97%	97%

**MACRON DYNAMICS INC**

THIS DRAWING IS THE PROPERTY OF MACRON DYNAMICS. ANY REPRODUCTIONS SHALL BE FOR QUOTATION, MANUFACTURING, OR PURCHASING PURPOSES ONLY. RELEASE OF DRAWINGS TO OTHER CONCERNS DOES NOT CONSTITUTE LICENSING IN ANY WAY. INFORMATION CONTAINED HEREIN IS PROPRIETARY AND CONFIDENTIAL.

DRAWN BY: TH	DATE: 9/18/2018	MATERIAL:
CHECKED BY: --	DATE: DD/MM/YYYY	
LAST SAVED BY: TH	DATE: 11/20/2024	
UNLESS OTHERWISE SPECIFIED, DIMENSIONS ARE IN MILLIMETERS. TOLERANCES UNLESS NOTED OTHERWISE:		FINISH:
.XX ± .762		
.XX ± .254		
.XXX ± .127		
OTHERWISE: ANG ± 0°30'		
SURFACE FINISH <input checked="" type="checkbox"/>		
BREAK ALL SHARP EDGES		
DIMENSIONAL LIMITS APPLY AFTER FINISHING		
THIRD ANGLE PROJECTION		

TITLE: <b>MACRON 064 GEARBOX</b>	
SCALE: 1:1	SHEET SIZE: C
SHEET: 1 OF 1	PART NUMBER: MPS-064-XXXX
REV:	REV: